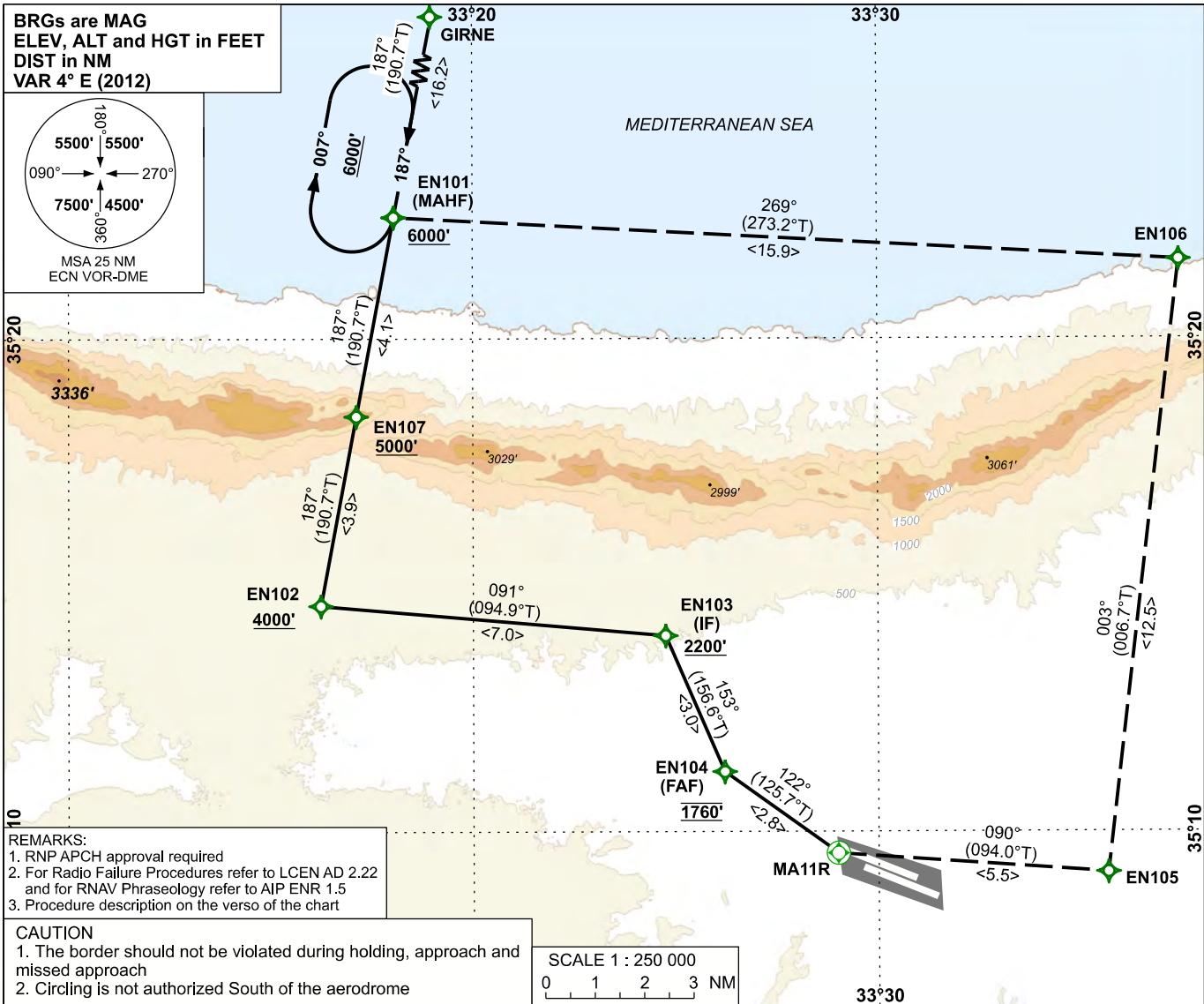


INSTRUMENT
APPROACH
CHART - ICAO

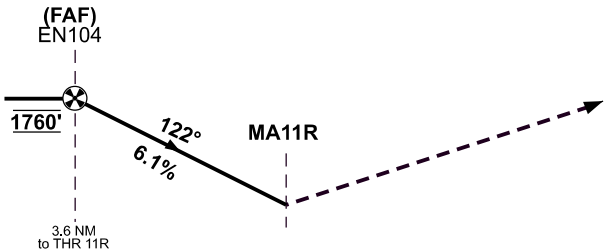
APP	127.750	AD ELEV	402 FT
TWR	120.450 - 120.250 - 120.375	TRANSITION ALTITUDE	6000 FT
ATIS	118.350		

LEFKOŞA/ERCAN
RNP
RWY 11R



MISSED APPROACH

CLIMB TO 6000 FT FROM MA11R TURN LEFT
INBOUND TO EN105, THEN TURN LEFT TO EN106,
THEN TURN LEFT TO EN101 AND JOIN THE HOLDING.
MA11R [K200-;L]-EN105[K220-;L]-EN106[K220-;L]-EN101 (MAHF)



RWY 11R THR ELEV 383 FT					3.6 NM to THR 11R				
NM to/from THR RWY 11R									
OCA (H)	A	B	C	D	DIST to THR	2	1	Timing not authorized for defining the MAPt.	
LNAV	830' (447')				ALTITUDE	1175	805		
Circling	900' (498')		1100' (698')		GS (Ground Speed)	kt	80	100	120
							140	160	180
					FAF-THR (3.6 NM)	MIN:SEC	2:42	2:10	1:46
							1:33	1:21	1:12
					Rate of Descent (6.1%)	FT/MIN	494	618	741
							865	988	1112